

## Example : Record of dialling sequence

Voltage on the line - Manual start - Triggers for automatic recording (Start and Stop)

Event list decoded thanks to signal analysis

Global view and zoom

Time from origin +00:00 00

Time between origin (red icon) and selected event

After a double click on the event (event list), the DTMF screen appear, showing the signal and values :

DTMF Signal

DTMF Parameters

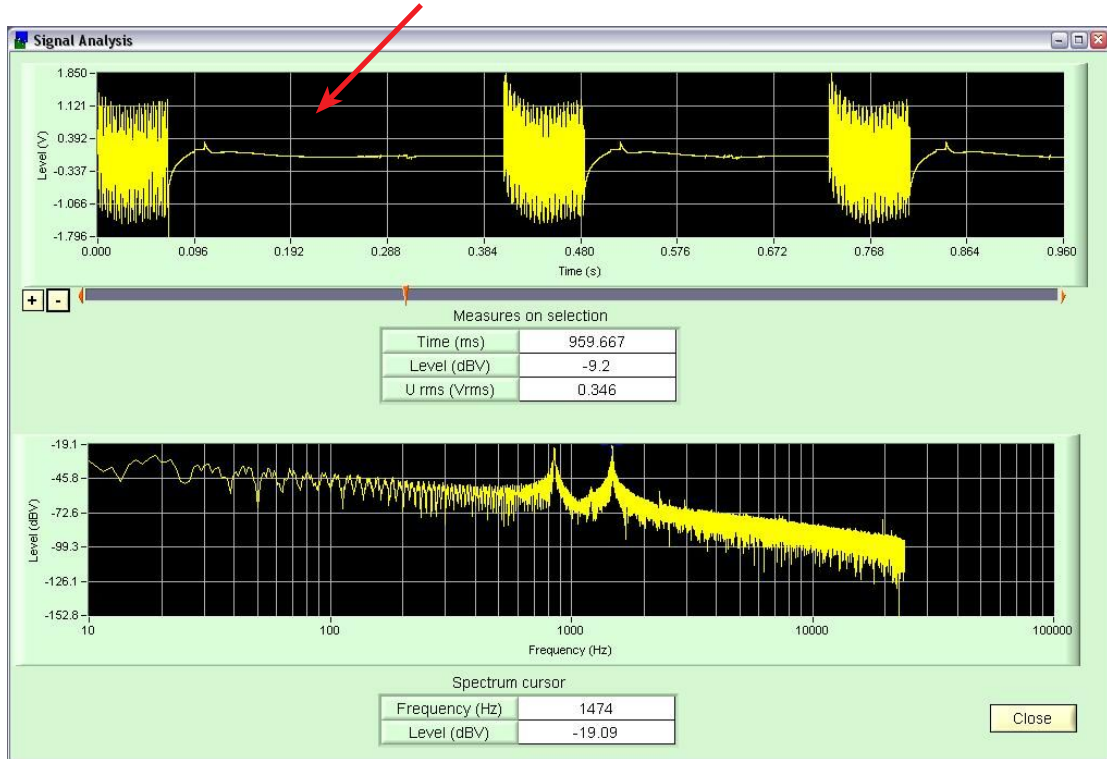
	Q23 - 1.5%	Value	Q23 + 1.5%
Code	-	0	-
Low Frequency (Hz)	926	936	956
High Frequency (Hz)	1316	1332	1356
Low Level (dBV)	-	-7.7	-
High Level (dBV)	-	-5.7	-

Time from origin +00:01 82

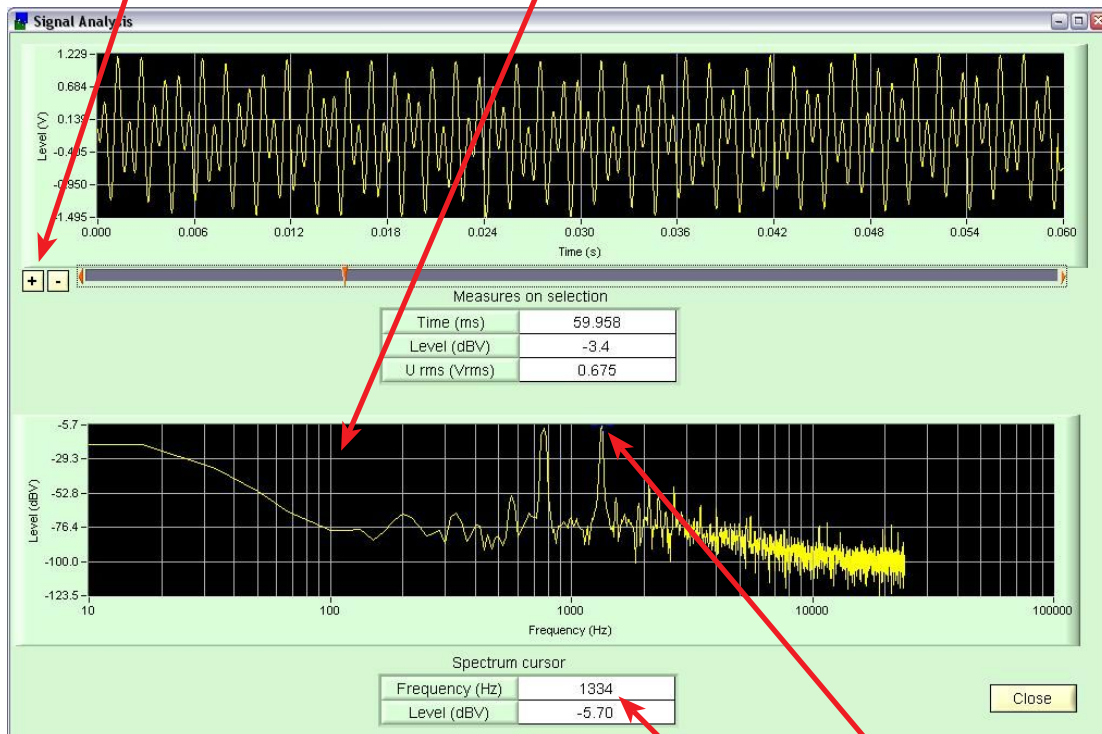
Time between Start and the first DTMF - Position of the frequency into the limits ( $\pm 1,5\%$  of Q23)

Example of different uses of the analysis screen :

Using cursors (not shown on this screen) it is possible to measure timings



Using + an - button and cursor you can adjust in order to have the signal you want to analyse with the spectrum window. On this example it is a DTMF.



Frequency and level of the cursor

A report can also be edited in Word format.